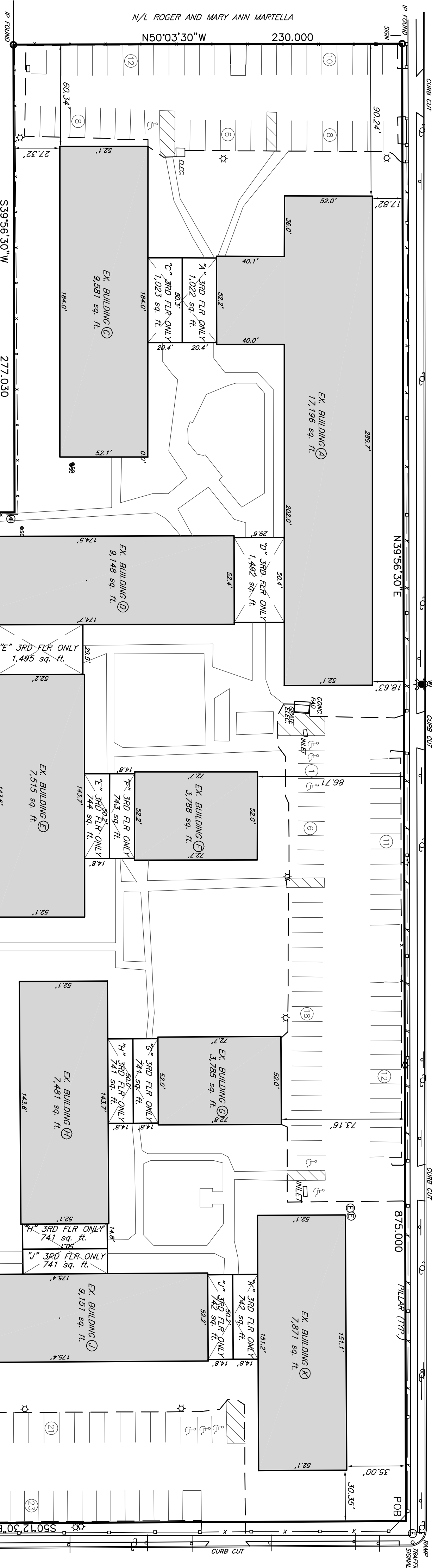


FOREST AVENUE

50' WIDE - PUBLIC STREET



MARSHALL STREET

66' WIDE - PUBLIC STREET

* BUILDINGS CONSTRUCTED PRIOR TO CURRENT ZONING ORDINANCE THEREFORE ANY DIMENSIONAL DEFICIENCIES ARE EXISTING LEGAL NON-CONFORMING USES.

N/L SELMA ASSOCIATES

N50°00'00\"W

391.800

76.15'

76.15'

76.15'

76.15'

76.15'

76.15'

76.15'

76.15'

76.15'

76.15'

76.15'

76.15'

76.15'

76.15'

76.15'

76.15'

76.15'

76.15'

76.15'

76.15'

76.15'

76.15'

76.15'

76.15'

76.15'

76.15'

76.15'

76.15'

76.15'

76.15'

76.15'

76.15'

76.15'

76.15'

76.15'

76.15'

76.15'

76.15'

76.15'

76.15'

76.15'

76.15'

76.15'

76.15'

76.15'

76.15'

76.15'

76.15'

76.15'

76.15'

76.15'

76.15'

76.15'

76.15'

76.15'

76.15'

76.15'

76.15'

76.15'

76.15'

76.15'

76.15'

76.15'

76.15'

76.15'

76.15'

76.15'

76.15'

76.15'

76.15'

76.15'

76.15'

76.15'

76.15'

76.15'

76.15'

76.15'

76.15'

76.15'

76.15'

76.15'

76.15'

76.15'

76.15'

76.15'

76.15'

76.15'

76.15'

76.15'

76.15'

76.15'

76.15'

76.15'

76.15'

76.15'

76.15'

76.15'

76.15'

76.15'

76.15'

76.15'

76.15'

76.15'

76.15'

76.15'

76.15'

76.15'

76.15'

76.15'

76.15'

76.15'

76.15'

76.15'

76.15'

76.15'

76.15'

76.15'

76.15'

76.15'

76.15'

76.15'

76.15'

76.15'

76.15'

76.15'

76.15'

76.15'

76.15'

76.15'

76.15'

76.15'

76.15'

76.15'

76.15'

76.15'

76.15'

76.15'

76.15'

76.15'

76.15'

76.15'

76.15'

76.15'

76.15'

76.15'

76.15'

76.15'

76.15'

76.15'

76.15'

76.15'

76.15'

76.15'

76.15'

76.15'

76.15'

76.15'

76.15'

76.15'

76.15'

76.15'

76.15'

76.15'

76.15'

76.15'

76.15'

76.15'

76.15'

76.15'

76.15'

76.15'

76.15'

76.15'

76.15'

76.15'

76.15'

76.15'

76.15'

76.15'

76.15'

76.15'

76.15'

76.15'

76.15'

76.15'

76.15'

76.15'

76.15'

76.15'

76.15'

76.15'

76.15'

76.15'

76.15'

76.15'

76.15'

76.15'

76.15'

76.15'

76.15'

76.15'

76.15'

76.15'

76.15'

76.15'

76.15'

76.15'

76.15'

76.15'

76.15'

76.15'

76.15'

76.15'

76.15'

76.15'

76.15'

76.15'

76.15'

76.15'

76.15'

76.15'

76.15'

76.15'

76.15'

76.15'

76.15'

76.15'

76.15'

76.15'

76.15'

76.15'

76.15'

76.15'

76.15'

76.15'

76.15'

76.15'

76.15'

76.15'

76.15'

76.15'

76.15'

76.15'

76.15'

76.15'

76.15'

76.15'

76.15'

76.15'

76.15'

76.15'

76.15'

76.15'

76.15'

76.15'

76.15'

76.15'

76.15'

76.15'

76.15'

76.15'

76.15'

76.15'

76.15'

76.15'

76.15'

76.15'

76.15'

76.15'

76.15'

76.15'

76.15'

76.15'

76.15'

76.15'

76.15'

76.15'

76.15'

76.15'

76.15'

76.15'

76.15'

76.15'

76.15'

76.15'

76.15'

76.15'

76.15'

76.15'

76.15'

76.15'

76.15'

76.15'

76.15'

76.15'

76.15'

76.15'

76.15'

76.15'

76.15'

76.15'

76.15'

76.15'

76.15'

76.15'

76.15'

76.15'

76.15'

76.15'

76.15'

76.15'

76.15'

76.15'

7