



Inventory & Condition Form

Property: Towers at Wyncote

Units: 414-2

Toilet Fixtures:

Replace Fixtures 3.5 gallons or greater

Comment: fixture 3.5



A photograph of a city skyline at dusk or dawn, with many skyscrapers and buildings visible. The sky is a mix of blue and orange. Overlaid on the image is a quote in two parts. The first part is in large, bold, black letters, and the second part is in smaller, regular black letters. The second part of the quote is also overlaid on a second quote in white letters.

"A mistake
is something
that you did
thinking it was right
but it was wrong.

A sin
is something
that you know
is wrong."

Use dye to check leak, adjust or change flapper, Fluid Master

Comment: fluid

**There comes a time in your life,
when you walk away from all the
drama and the people who create it.**

**You surround yourself with
people who make you laugh.
Forget the bad, and focus on the
good. Love the people who treat
you right, pray for the ones who
don't. Life is too short to be
anything but happy.**

**Falling down is a part of life.
Getting back up is living.**

~Jose' N. Harris





Supply Lines/Replace Plastic Lines

Comment: supply lines





Sink Faucets:

Leaks

Change Washers





Seats

Faucet

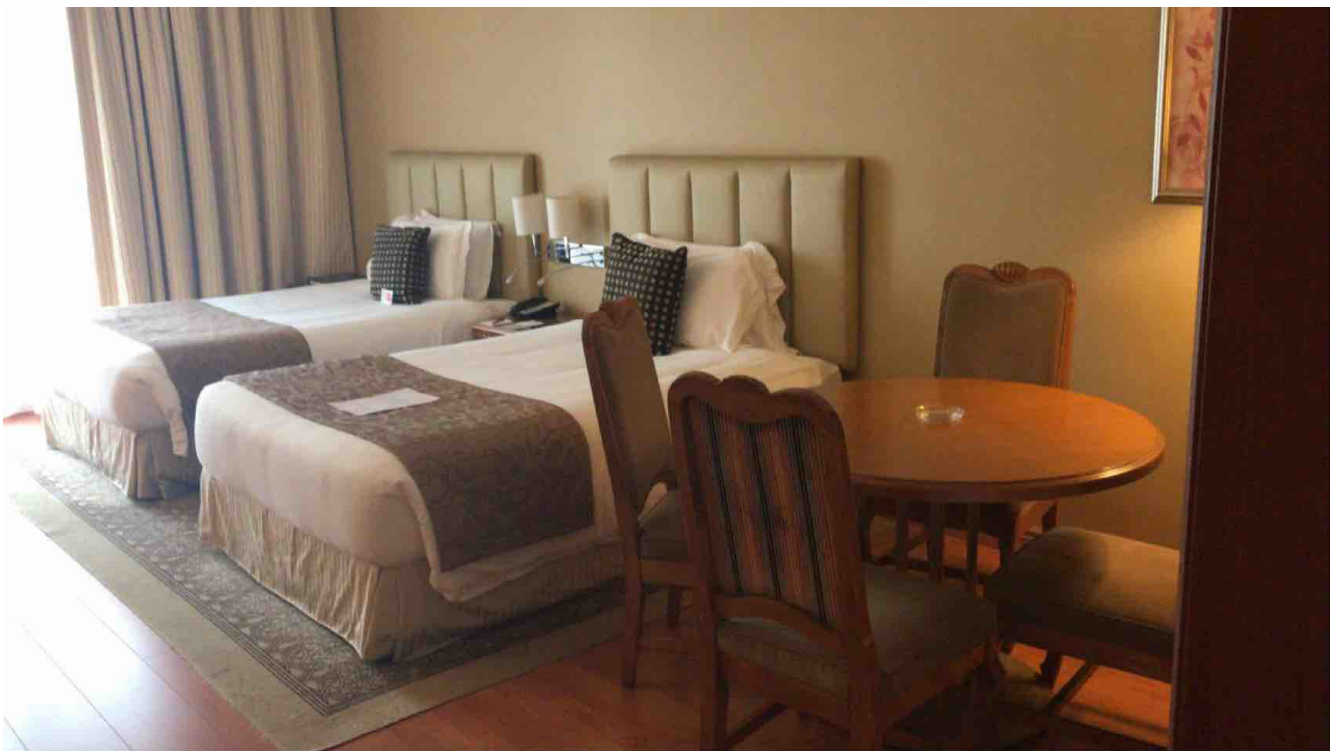
Comment: faucet





Include clean/replace aerator

Comment: include



Pop up mechanism

Comment: check

"Never waste your
feelings on people who
don't value you."

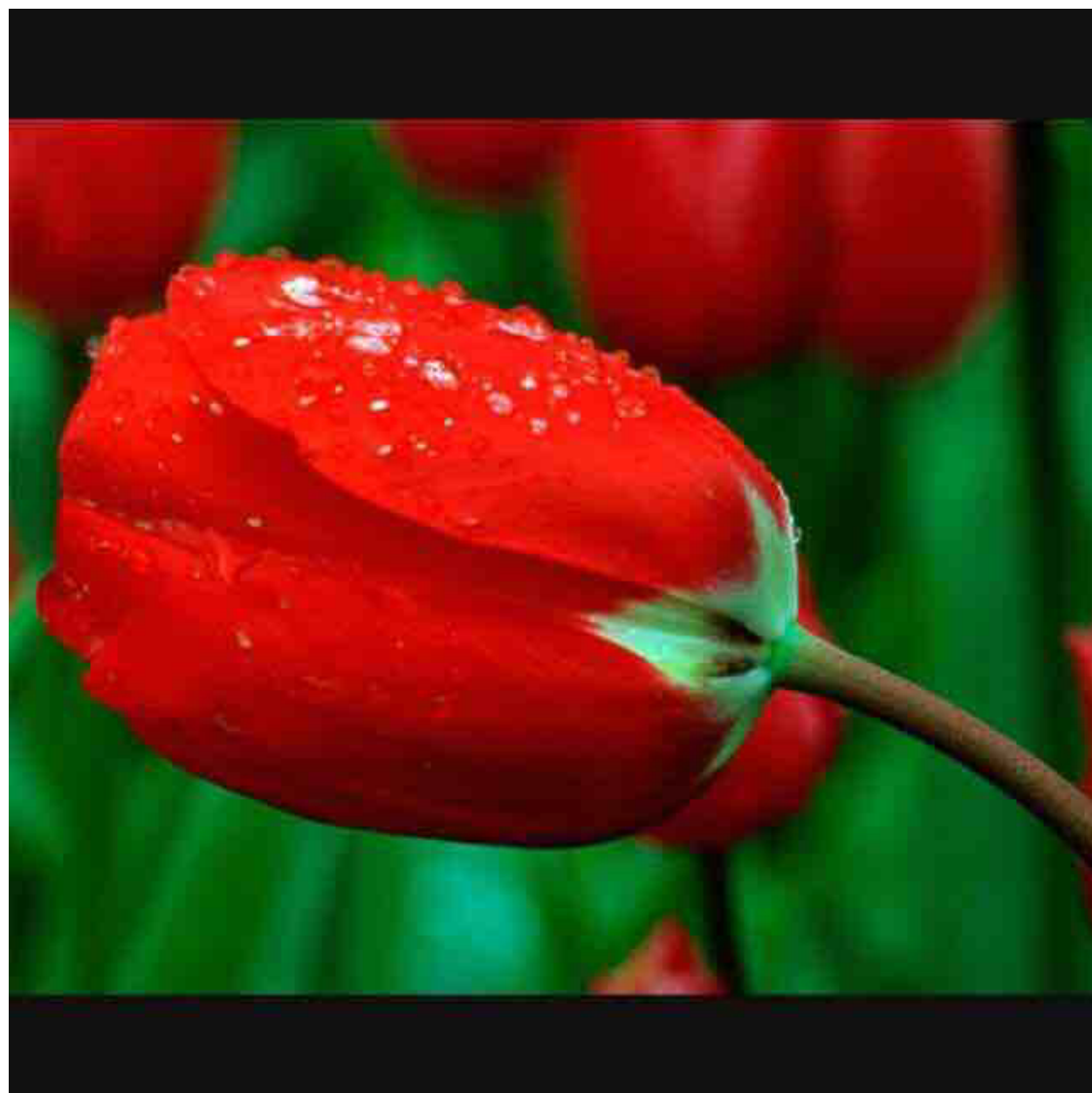
PowerPlug!

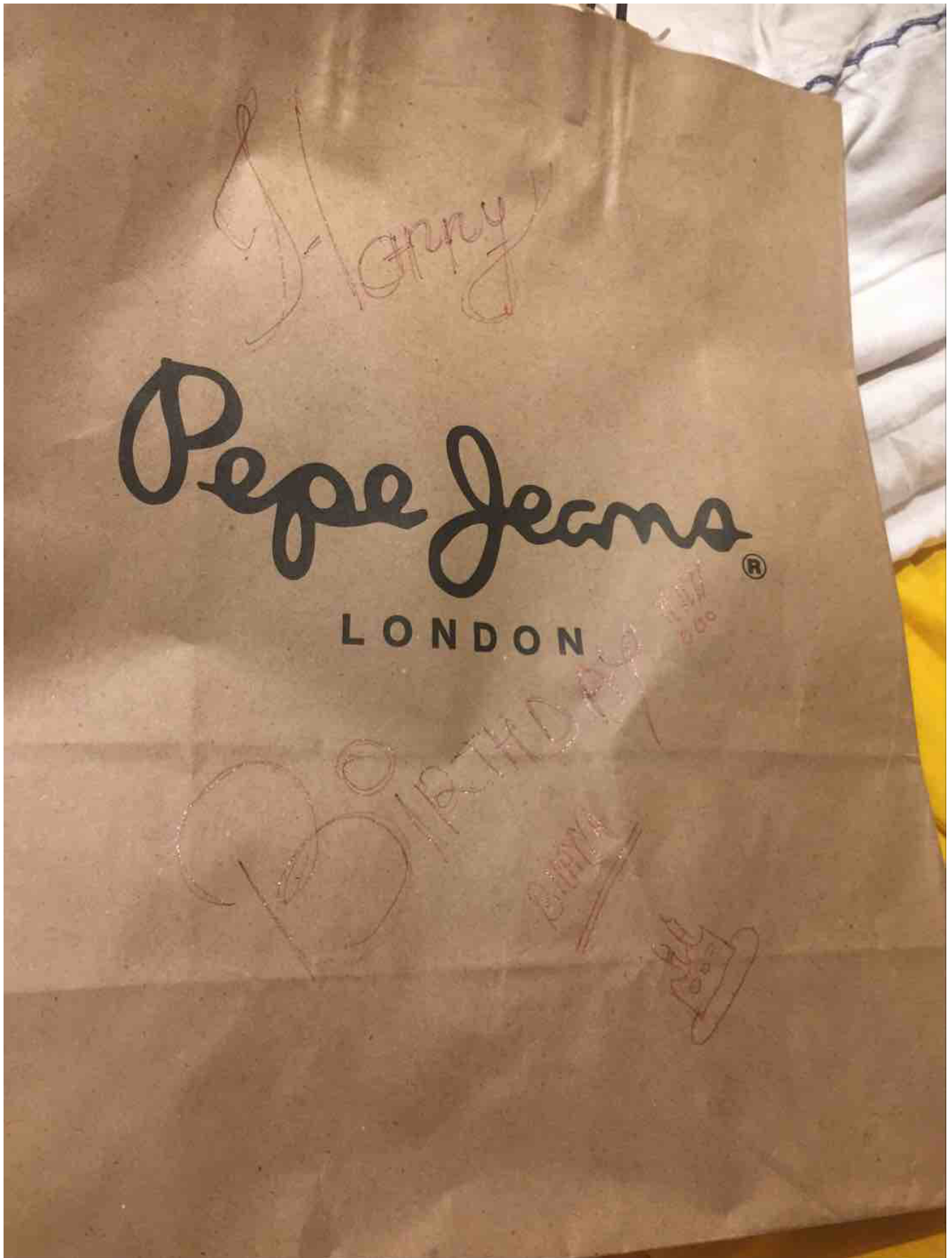


Tub and Shower:

Leaks

Comment: leaks





Change Washers

Comment: change washer



CAREERS

CONTACT

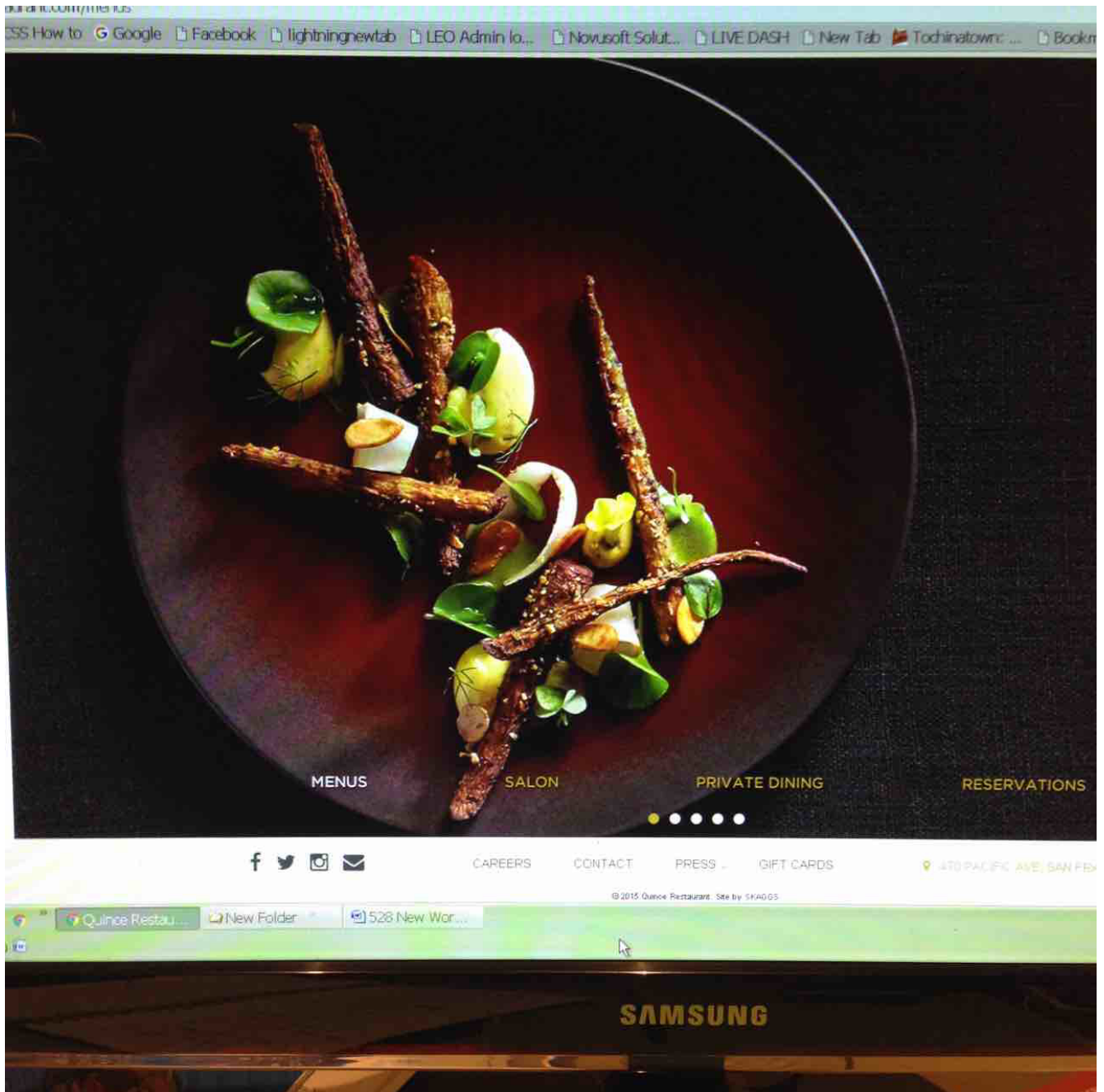
PRESS

GIFT CARDS

470 PACIFIC AVE., SAN FRANCISCO

© 2015 Quince Restaurant. Site by SKAGGS

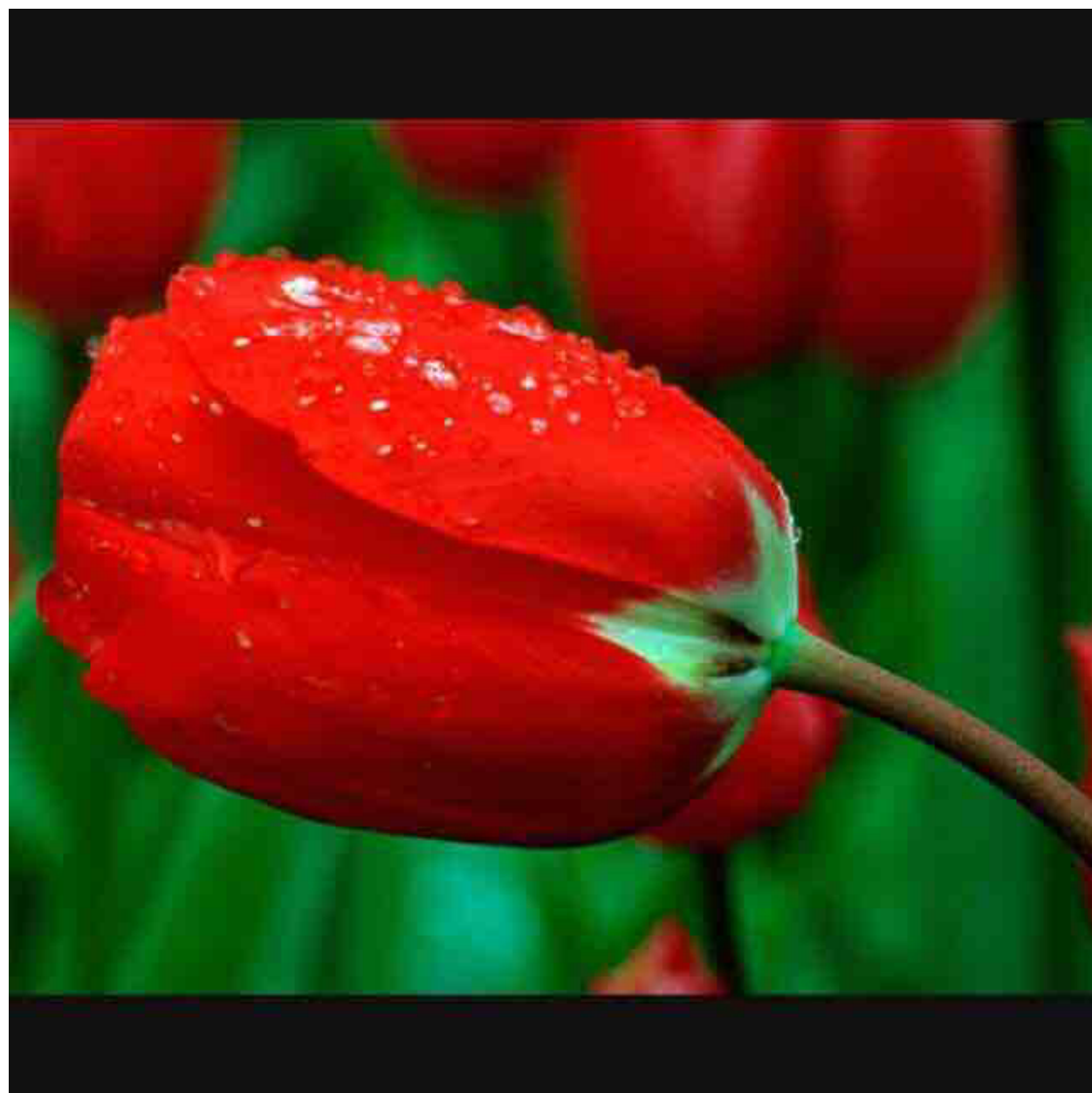
SAMSUNG



Seats

Faucet

Comment: faucet






Refill container with water in dryer lint trap

New/Old Shower Diverters

Comment: new



Be good enough to
forgive someone, But
don't be stupid enough
to trust them again.



Inspection:

Electrical panel

Comment: e p





Clean dryer vents/check water

Comment: clean dryer



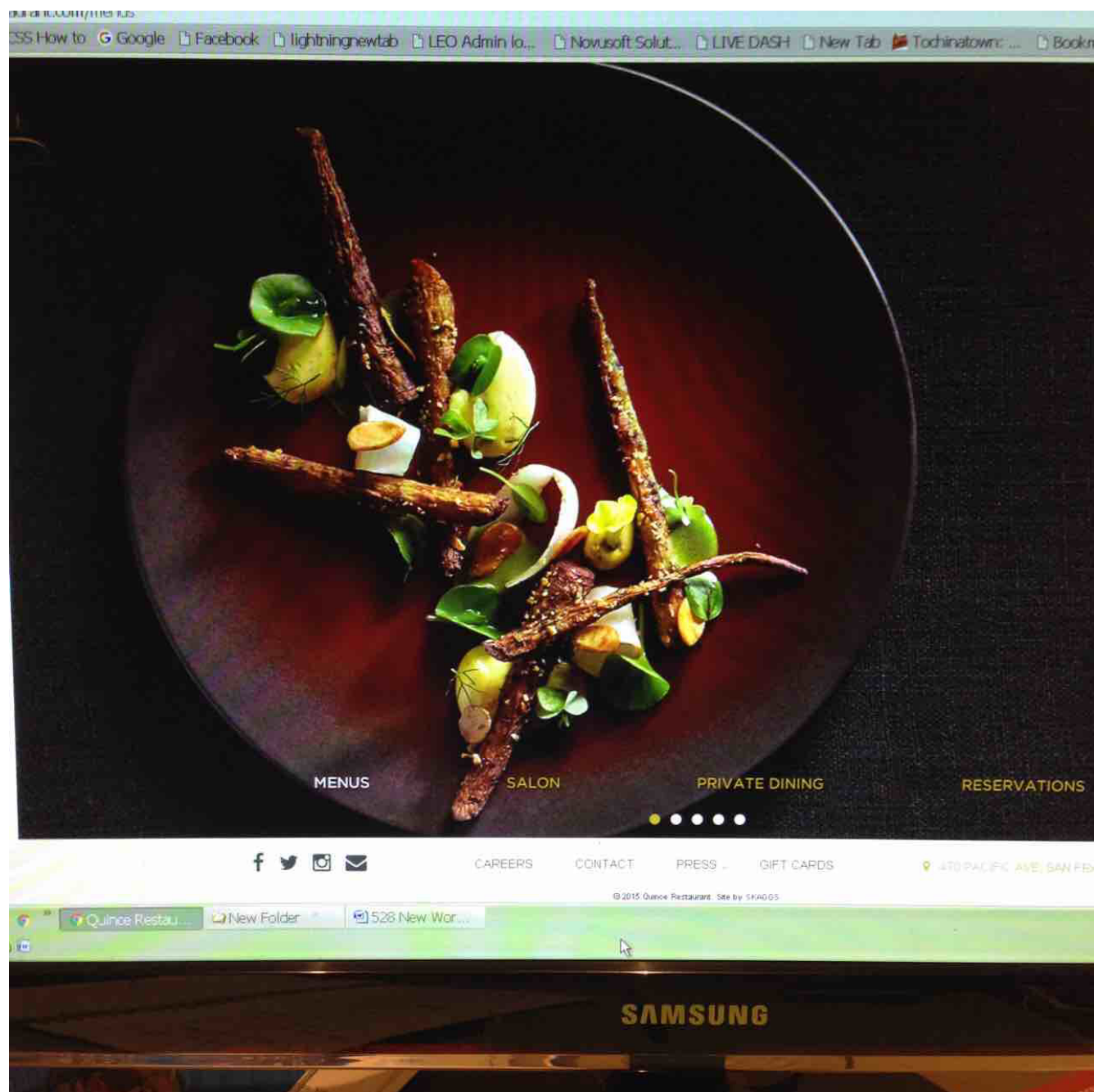


Check for gaps in windows - closing securely

Check thermostat control

Install pan under hot water heater

Comment: pan





Change air conditioning filters/Kitchen/Bath Vents

Check self closing door

Check water filled in dryer vent

heck grease on auto out/Installed





Water Alarm-Hot Water Heater/AC Closet

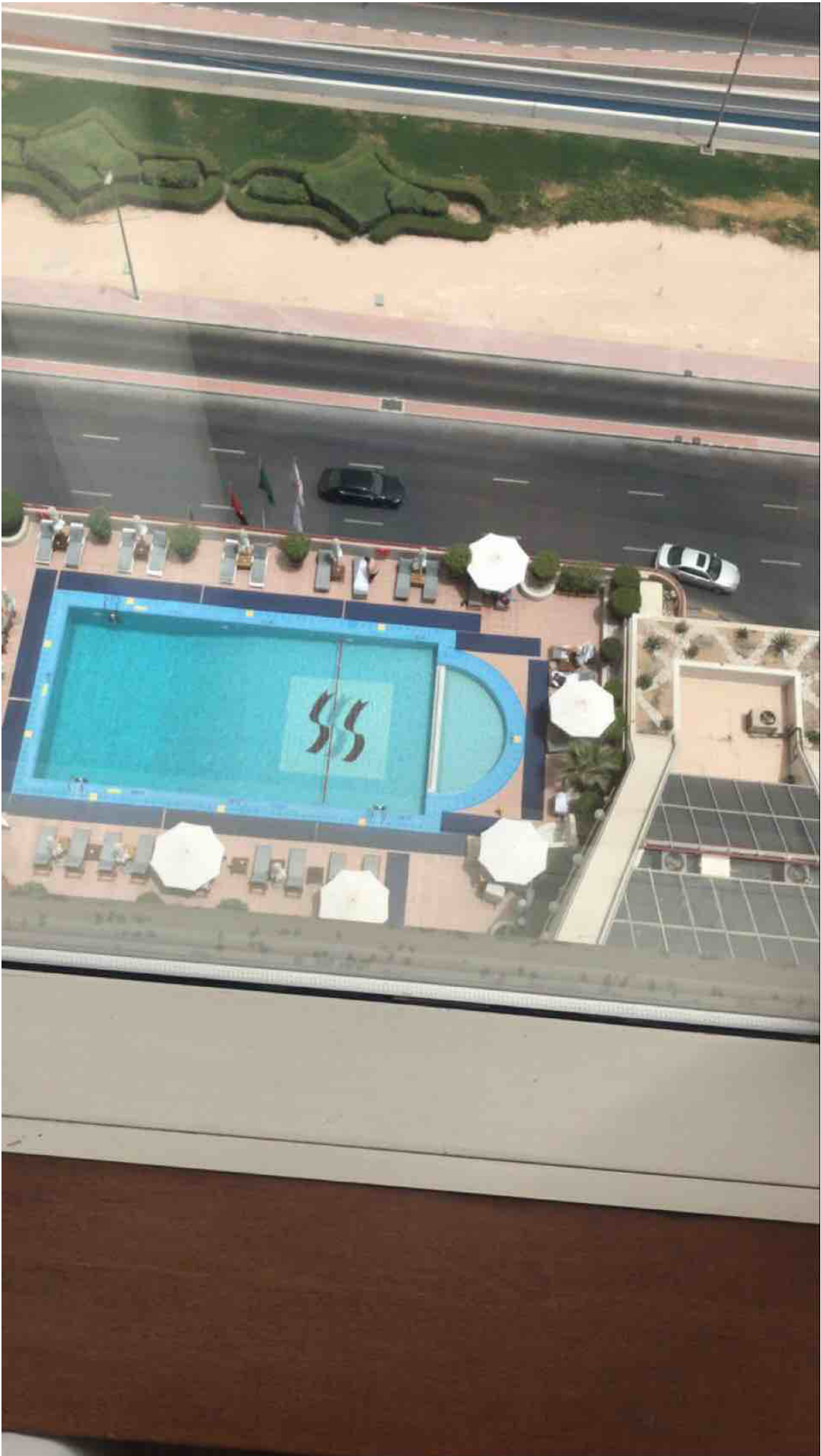
GFI on porches

Appliances:

Washer/Dryer

Dishwasher

Microwave





Range

Refrigerator