



Inventory & Condition Form

Property: Towers at Wyncote

Units: 414-2

Toilet Fixtures:

Replace Fixtures 3.5 gallons or greater

Comment: fixture 3.5



A background image of a city skyline at dusk or dawn, with lights from buildings visible against a hazy sky. The text is overlaid on this image.

"A mistake
is something
that you did
thinking it was right
but it was wrong.

A sin
is something
that you know
is wrong."

Use dye to check leak, adjust or change flapper, Fluid Master

Comment: use dye

**There comes a time in your life,
when you walk away from all the
drama and the people who create it.**

**You surround yourself with
people who make you laugh.
Forget the bad, and focus on the
good. Love the people who treat
you right, pray for the ones who
don't. Life is too short to be
anything but happy.**

**Falling down is a part of life.
Getting back up is living.**

~Jose' N. Harris



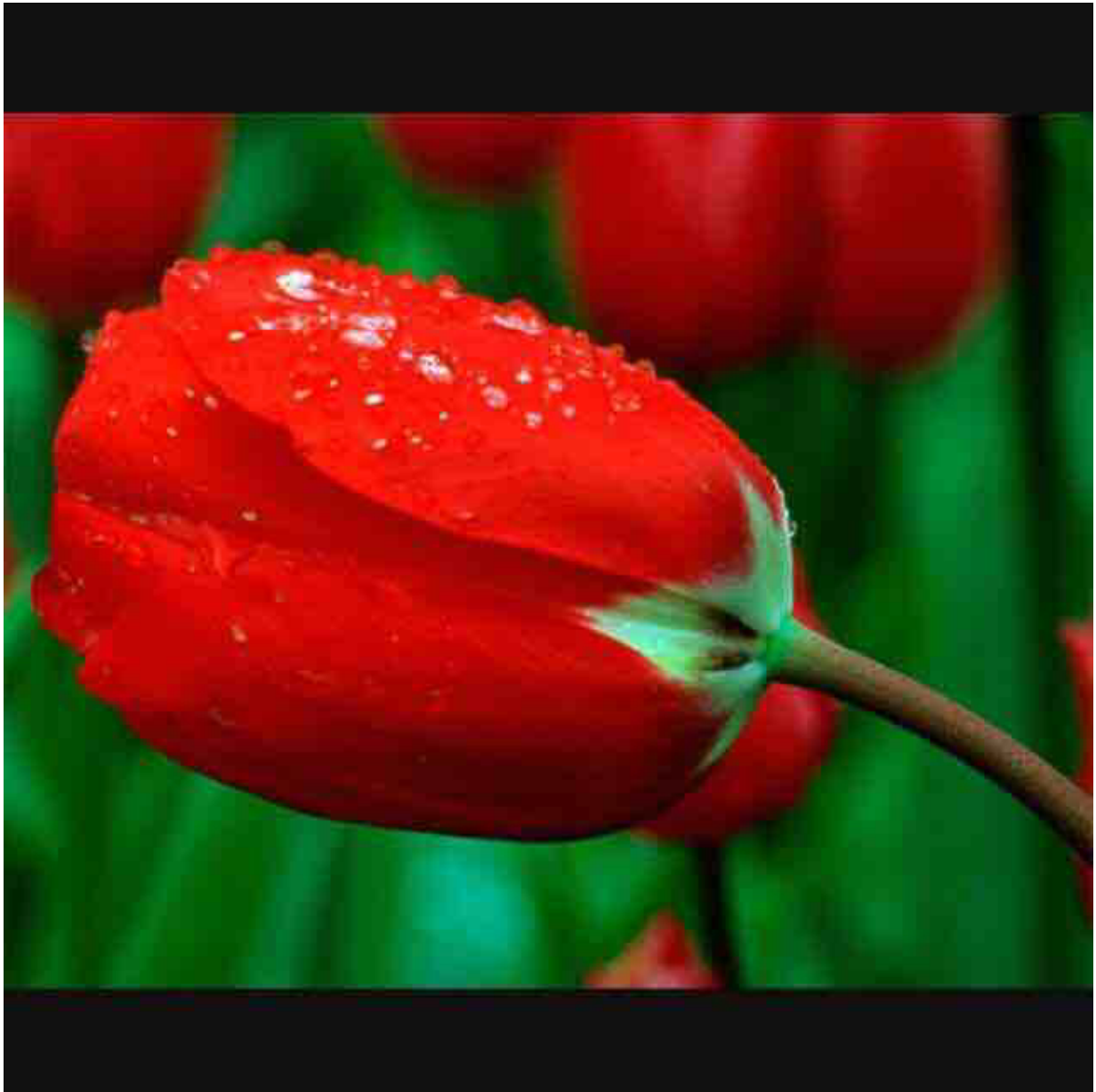
A city skyline at dusk, with the sun setting behind the horizon, casting a warm glow over the buildings. The sky is a mix of blue and orange. The text is overlaid on the image.

"A mistake
is something
that you did
thinking it was right
but it was wrong.

A sin
is something
that you know
is wrong."

Supply Lines/Replace Plastic Lines

Comment: supply lines





Sink Faucets:

Leaks

Change Washers

Seats

Faucet

Include clean/replace aerator

Pop up mechanism

Tub and Shower:

Leaks

Change Washers

Seats

Comment: seats





Faucet

Refill container with water in dryer lint trap

New/Old Shower Diverters

Inspection:

Electrical panel

Clean dryer vents/check water

Check for gaps in windows - closing securely

Check thermostat control

Install pan under hot water heater

Change air conditioning filters/Kitchen/Bath Vents

Check self closing door

Check water filled in dryer vent

check grease on auto out/Installed

Water Alarm-Hot Water Heater/AC Closet

GFI on porches

Appliances:

Washer/Dryer

Comment: washer



Photo from Ashley on Foodspotting



Photo from Mike Chau on Foodspotting

Dishwasher

Comment: dish





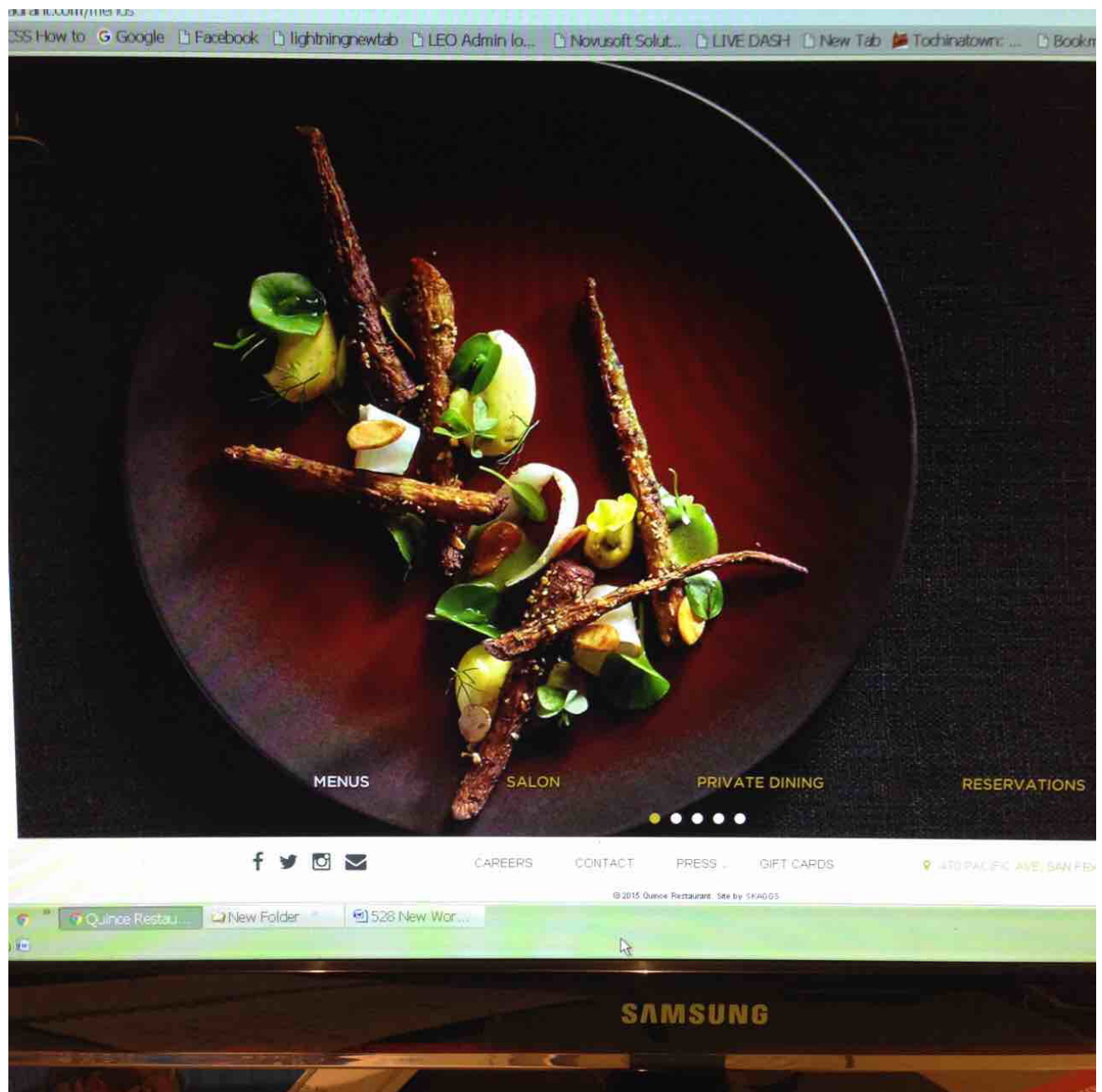
Microwave





Range

Comment: range





Refrigerator

