



Inventory & Condition Form

Property: Towers at Wyncote

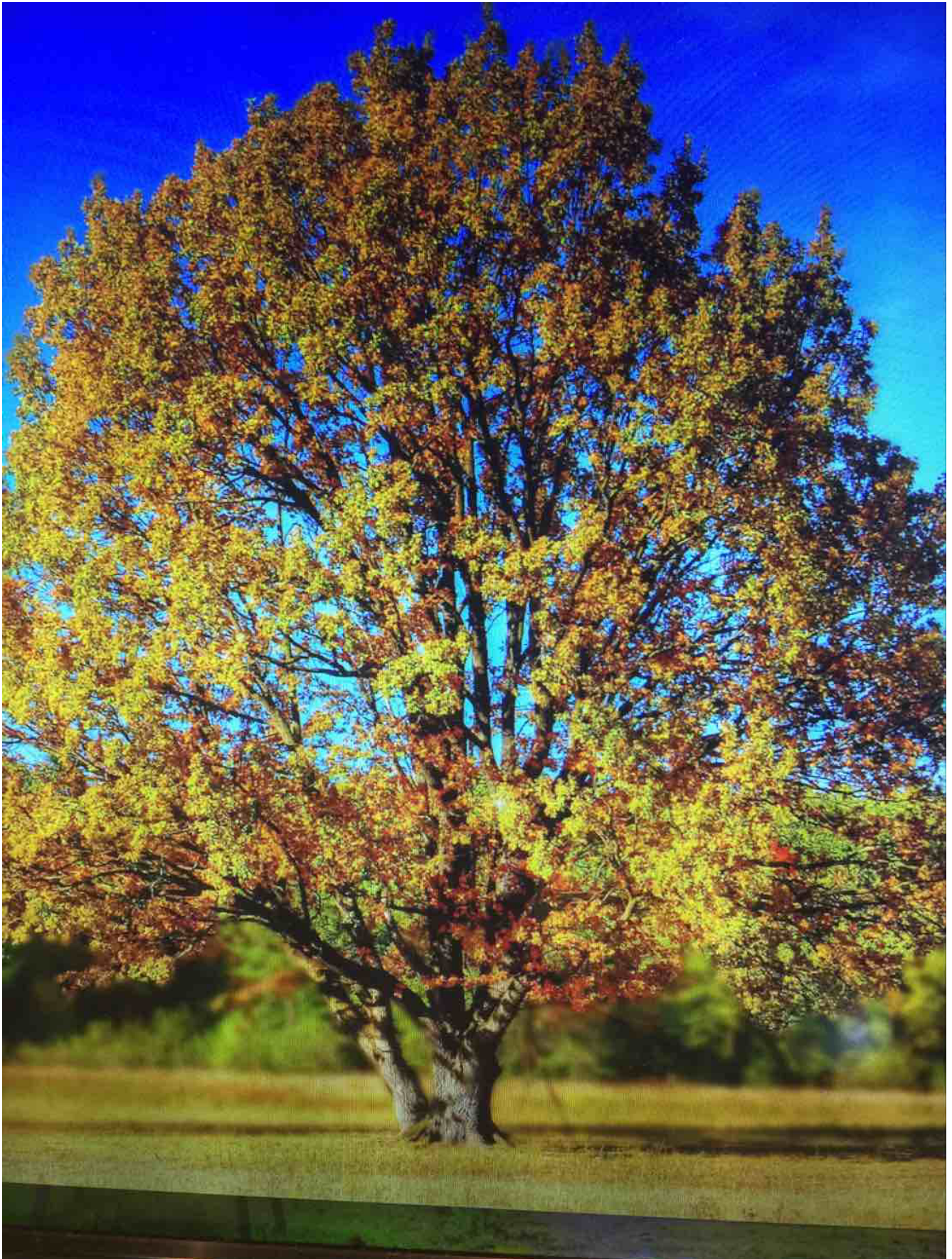
Units: 414-2

Toilet Fixtures:

Replace Fixtures 3.5 gallons or greater

Comment: replace fixtures 3.4 gallons





Use dye to check leak, adjust or change flapper, Fluid Master

Comment: dye or check leak.



A photograph of a city skyline at dusk or dawn, with many skyscrapers and buildings visible. The sky is a mix of blue and orange. Overlaid on the image is a quote in two parts. The first part is in large, bold, black letters, and the second part is in smaller, regular black letters. The second part of the quote is also overlaid on a second, smaller quote in white letters.

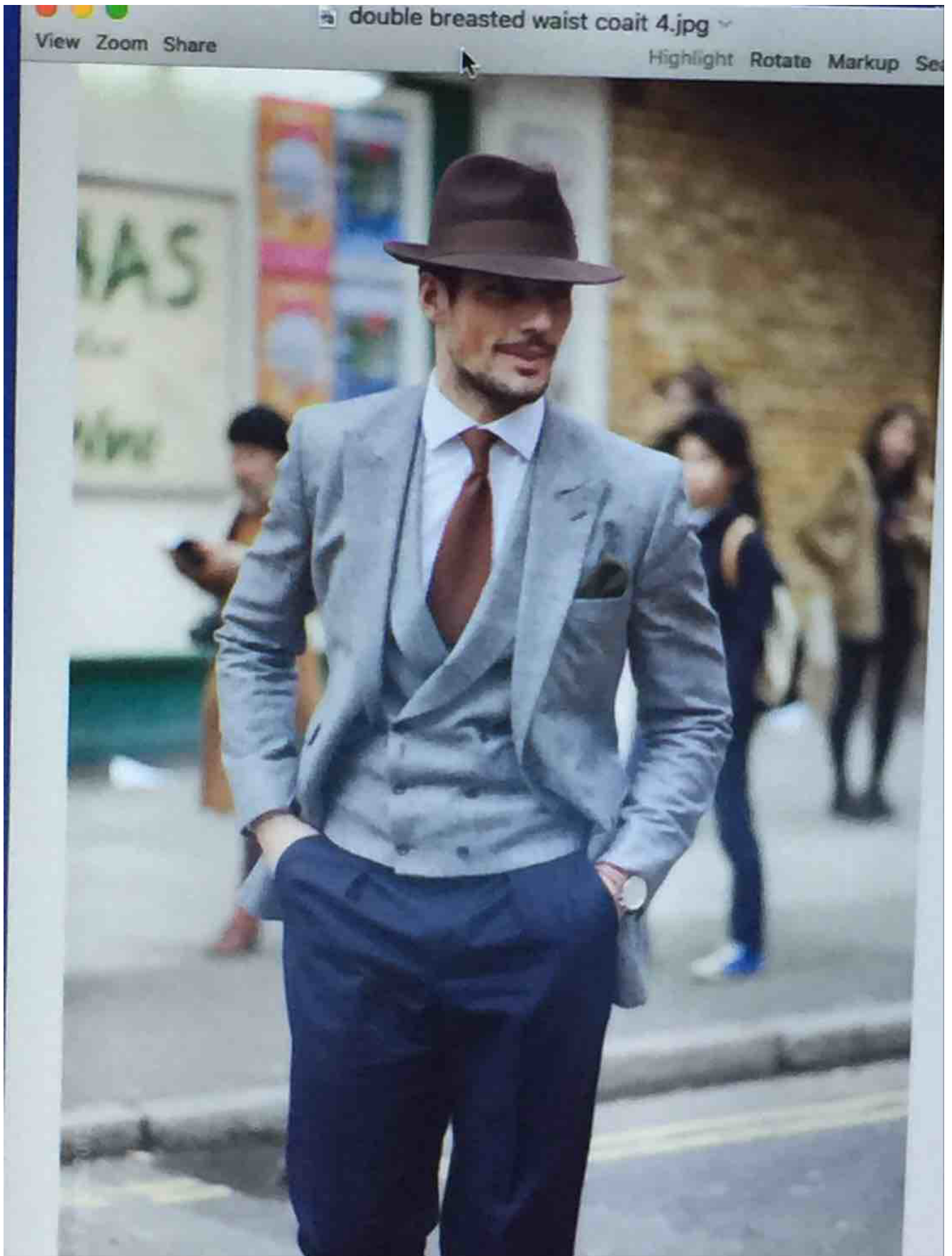
"A mistake
is something
that you did
thinking it was right
but it was wrong.

A sin
is something
that you know
is wrong."

Supply Lines/Replace Plastic Lines

Comment: supply lines





Sink Faucets:

Leaks

Comment: sink faucets leaks

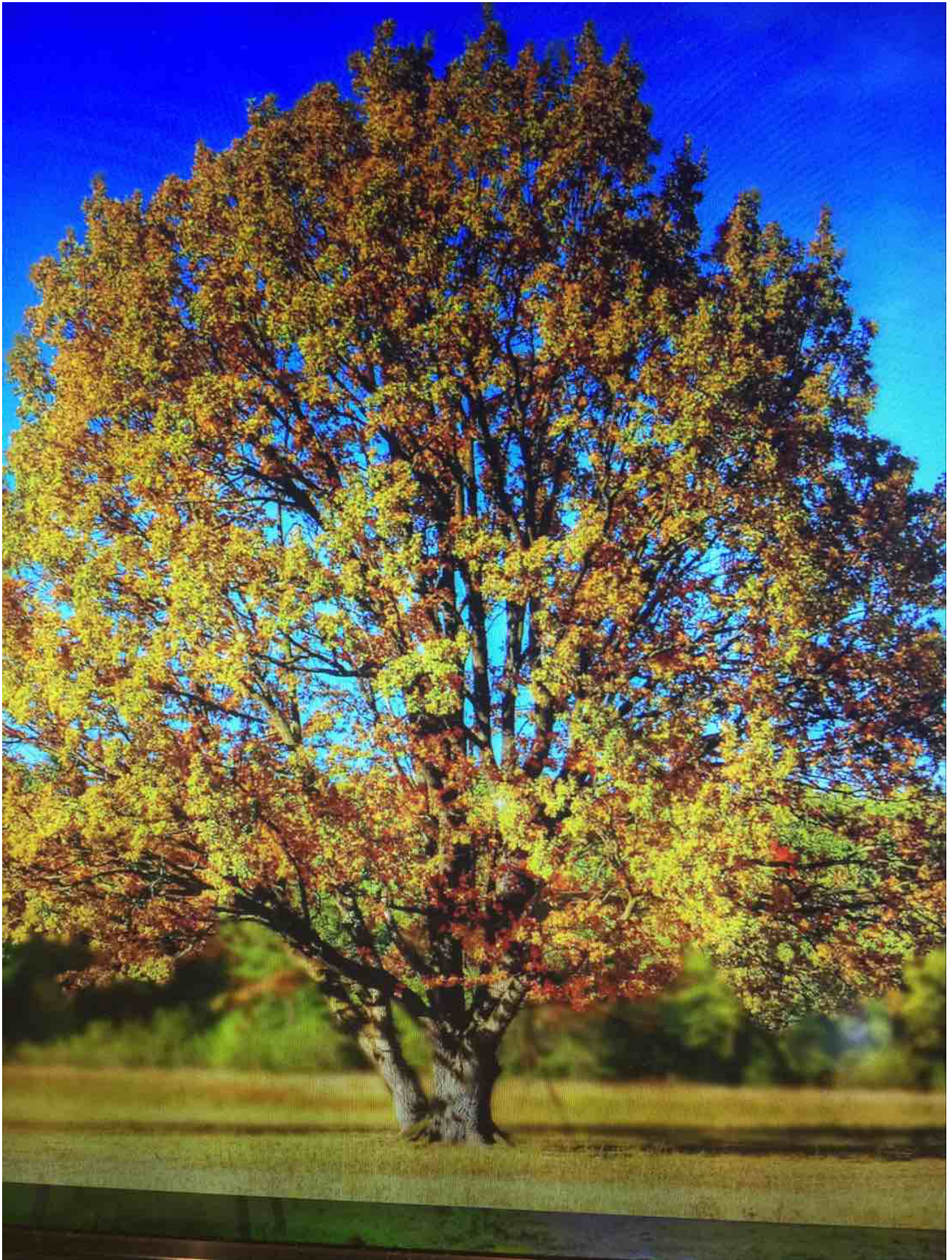
**There comes a time in your life,
when you walk away from all the
drama and the people who create it.**

**You surround yourself with
people who make you laugh.
Forget the bad, and focus on the
good. Love the people who treat
you right, pray for the ones who
don't. Life is too short to be
anything but happy.**

**Falling down is a part of life.
Getting back up is living.**

~Jose' N. Harris





Change Washers

Comment: change washers





Seats

Comment: seats





Faucet

Comment: faucet





Include clean/replace aerator

Comment: include clean


The background of the image is a photograph of a city skyline at dusk or dawn. The sky is a mix of light blue and orange, with some clouds. The city below is filled with numerous skyscrapers and buildings, many of which have their lights on, creating a bokeh effect of small lights. The overall tone is contemplative and serene.

"A mistake

is something
that you did
thinking it was right
but it was wrong.

A sin

is something
that you know
is wrong."



"Never waste your
feelings on people who
don't value you."

PowerPlug!

Pop up mechanism

Comment: kitchen faucet pop up

**There comes a time in your life,
when you walk away from all the
drama and the people who create it.**

**You surround yourself with
people who make you laugh.
Forget the bad, and focus on the
good. Love the people who treat
you right, pray for the ones who
don't. Life is too short to be
anything but happy.**

**Falling down is a part of life.
Getting back up is living.**

~Jose' N. Harris



A background image of a city skyline at dusk or dawn, with many skyscrapers and lights visible. The sky is a mix of blue and orange.

"A mistake
is something
that you did
thinking it was right
but it was wrong.

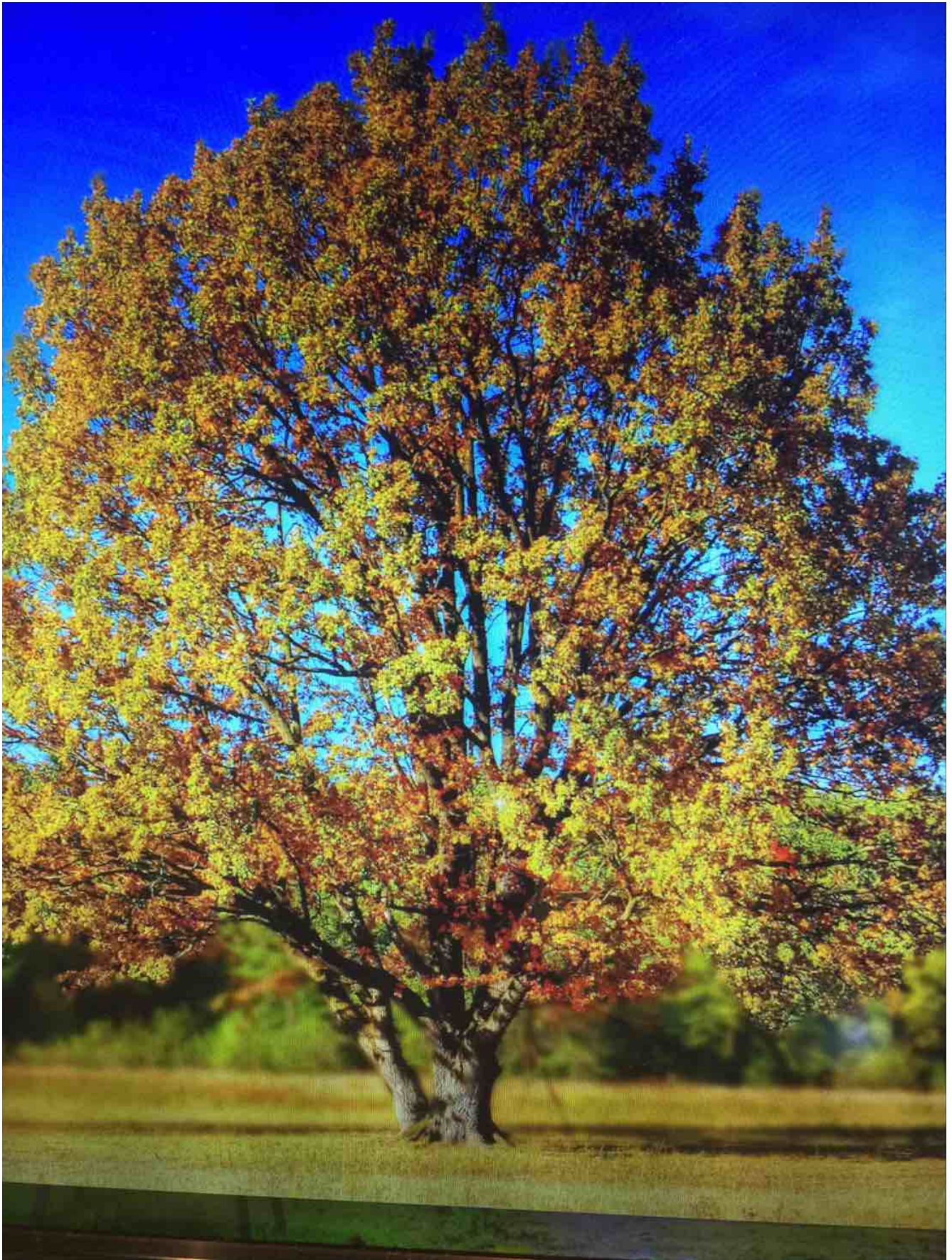
A sin
is something
that you know
is wrong."

Tub and Shower:

Leaks

Comment: leaks





Change Washers

Comment: change washer

The background of the image is a photograph of a city skyline at dusk or dawn. The sky is a mix of light blue and orange, with some clouds. The city below is filled with numerous skyscrapers and buildings, many of which have their lights on, creating a bokeh effect of small lights. The overall tone is contemplative and serene.

"A mistake

is something
that you did
thinking it was right
but it was wrong.

A sin

is something
that you know
is wrong."



Seats

Comment: seats

**There comes a time in your life,
when you walk away from all the
drama and the people who create it.**

**You surround yourself with
people who make you laugh.
Forget the bad, and focus on the
good. Love the people who treat
you right, pray for the ones who
don't. Life is too short to be
anything but happy.**

**Falling down is a part of life.
Getting back up is living.**

~Jose' N. Harris

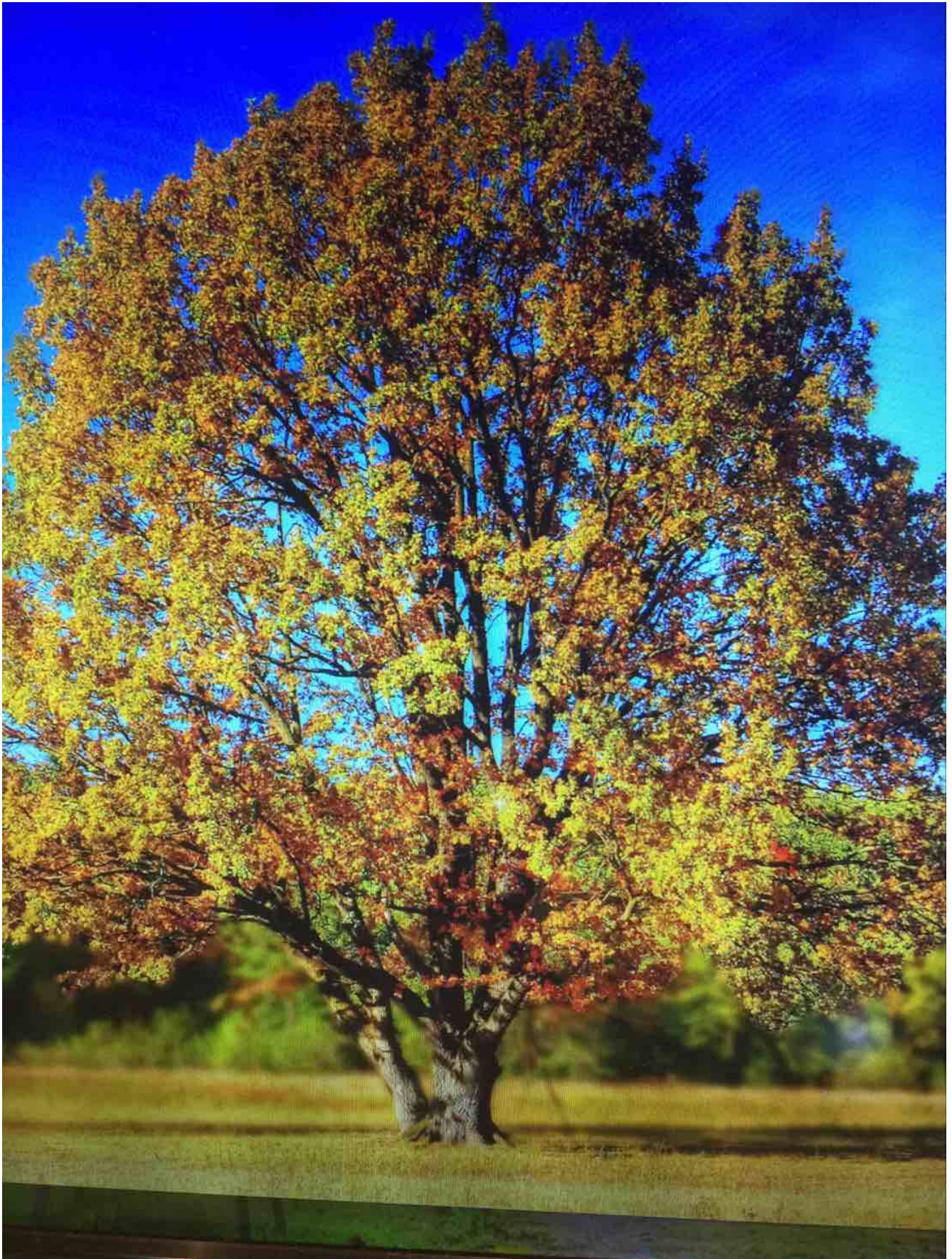




Faucet

Comment: faucet





Refill container with water in dryer lint trap

Comment: refill container with water





New/Old Shower Diverters

Comment: new old showers



Photo from Mike Chau on Foodspotting



Photo from Mike Chau on Foodspotting

Inspection:

Electrical panel

Comment: electrical



Photo from Mike Chau on Foodspotting



Photo from Mike Chau on Foodspotting

Clean dryer vents/check water

Comment: clean dryer



[MENUS](#)

[SALON](#)

[PRIVATE DINING](#)

[RESERVATIONS](#)



[CAREERS](#)

[CONTACT](#)

[PRESS](#)

[GIFT CARDS](#)

470 PACIFIC AVE., SAN FRANCISCO

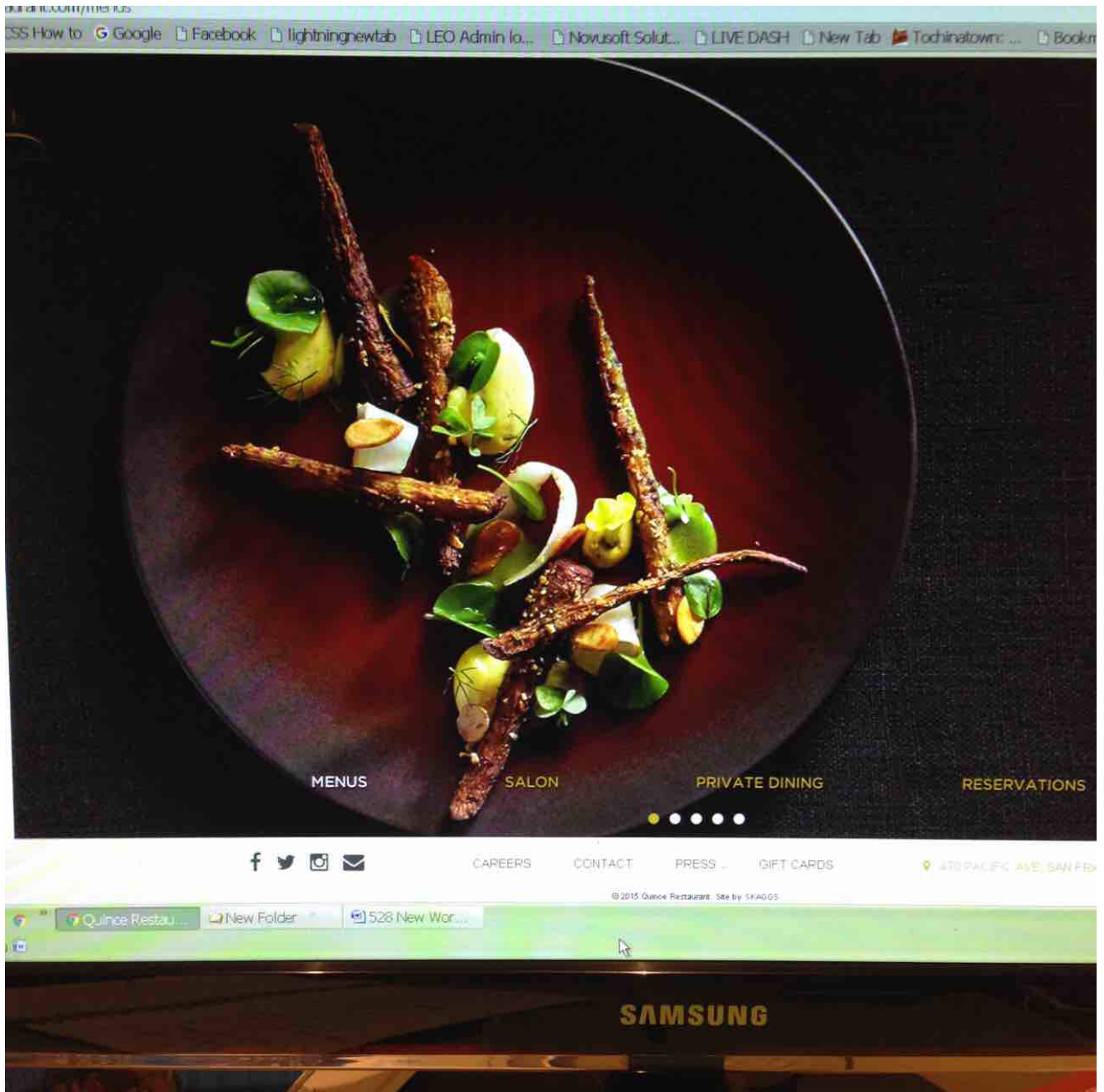
© 2015 Quince Restaurant. Site by SKAGGS

Quince Restau...

New Folder

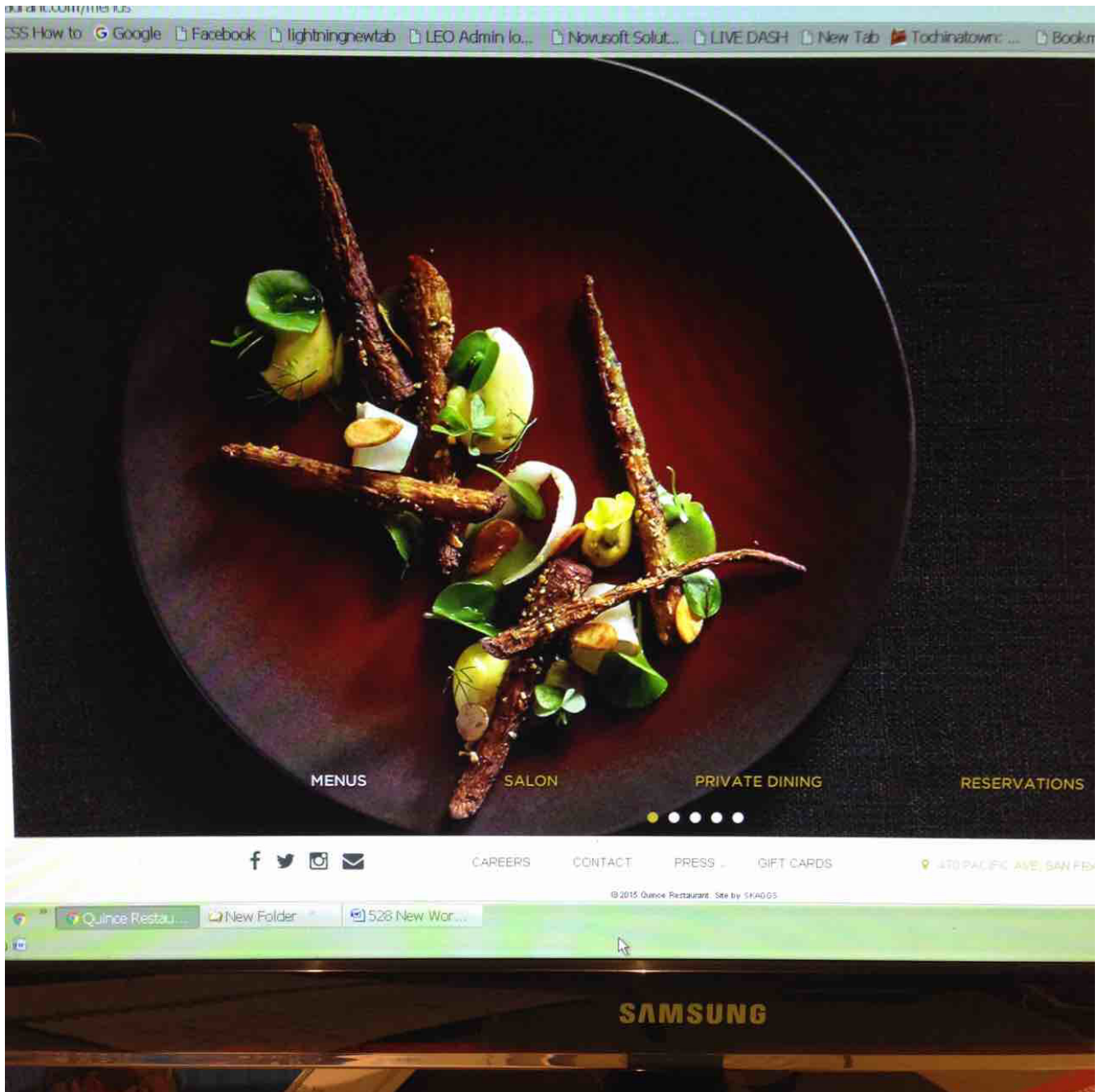
528 New Wor...

SAMSUNG



Check for gaps in windows - closing securely

Comment: gaps





Check thermostat control

Comment: thermostat



MENUS

SALON

PRIVATE DINING

RESERVATIONS



CAREERS

CONTACT

PRESS

GIFT CARDS

470 PACIFIC AVE, SAN FR

© 2015 Quince Restaurant. Site by SKAGGS

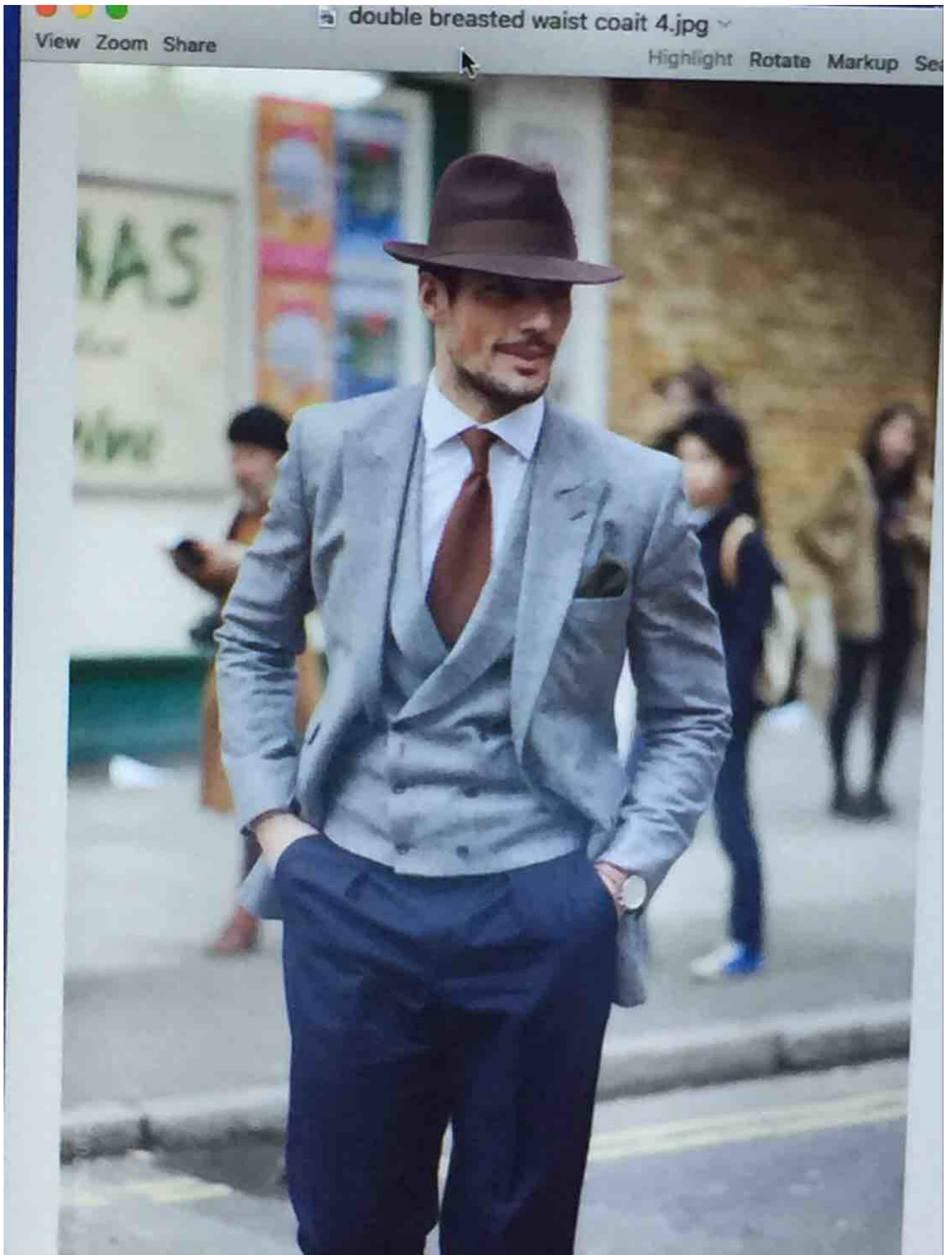
SAMSUNG



Install pan under hot water heater

Comment: install pan





Change air conditioning filters/Kitchen/Bath Vents

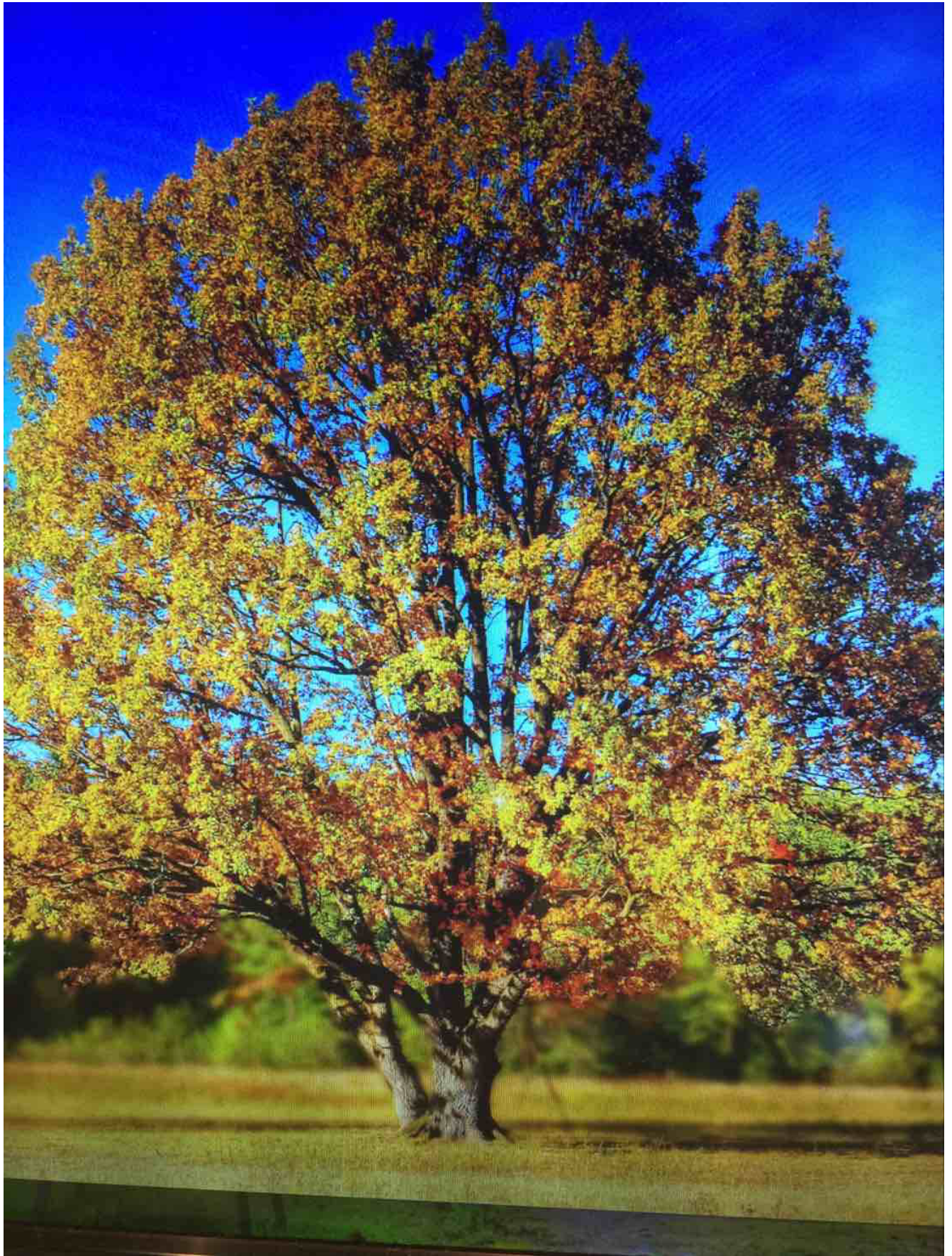
Comment: change air conditioning

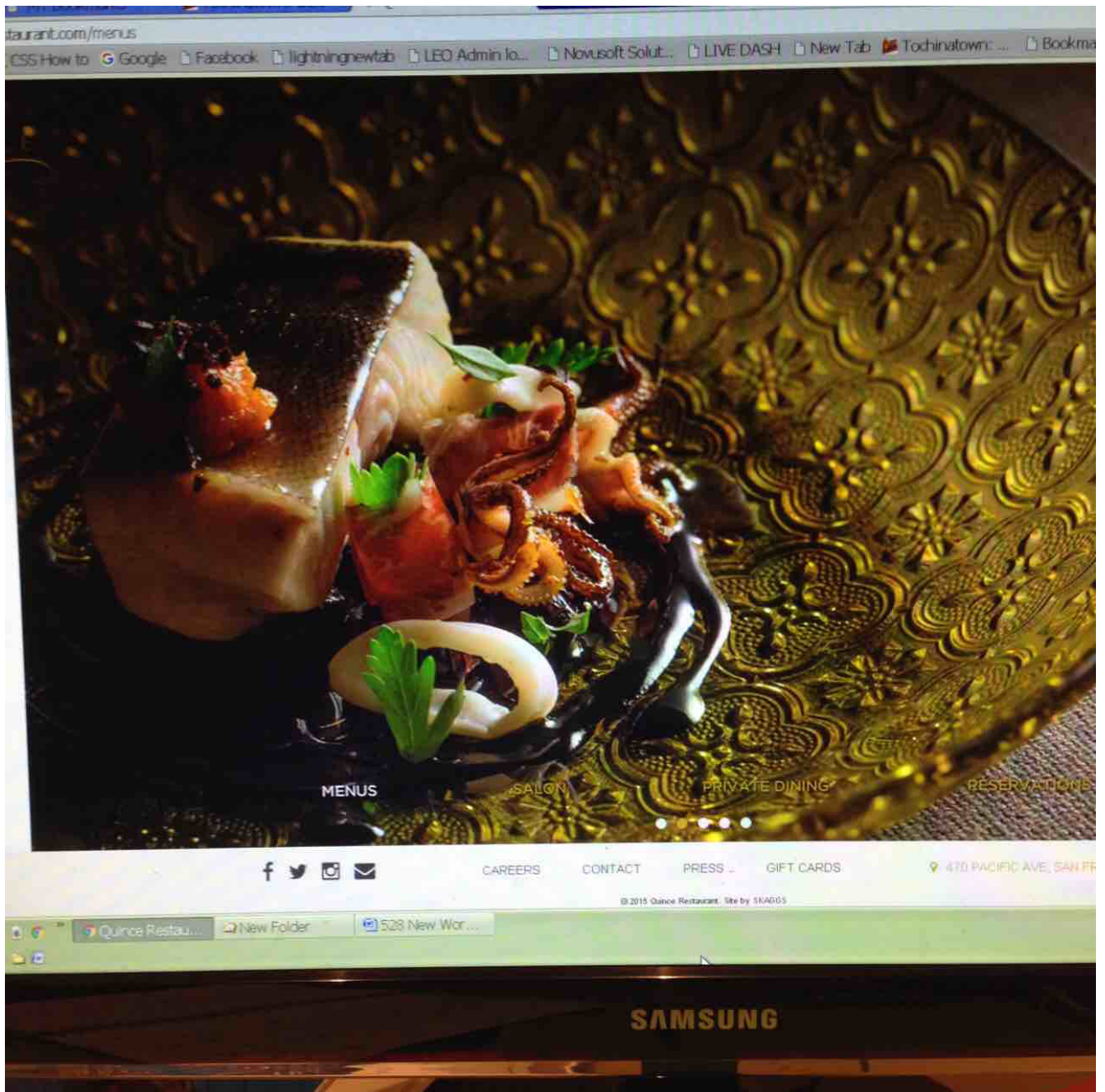




Check self closing door

Comment: check self





Check water filled in dryer vent

Comment: check water

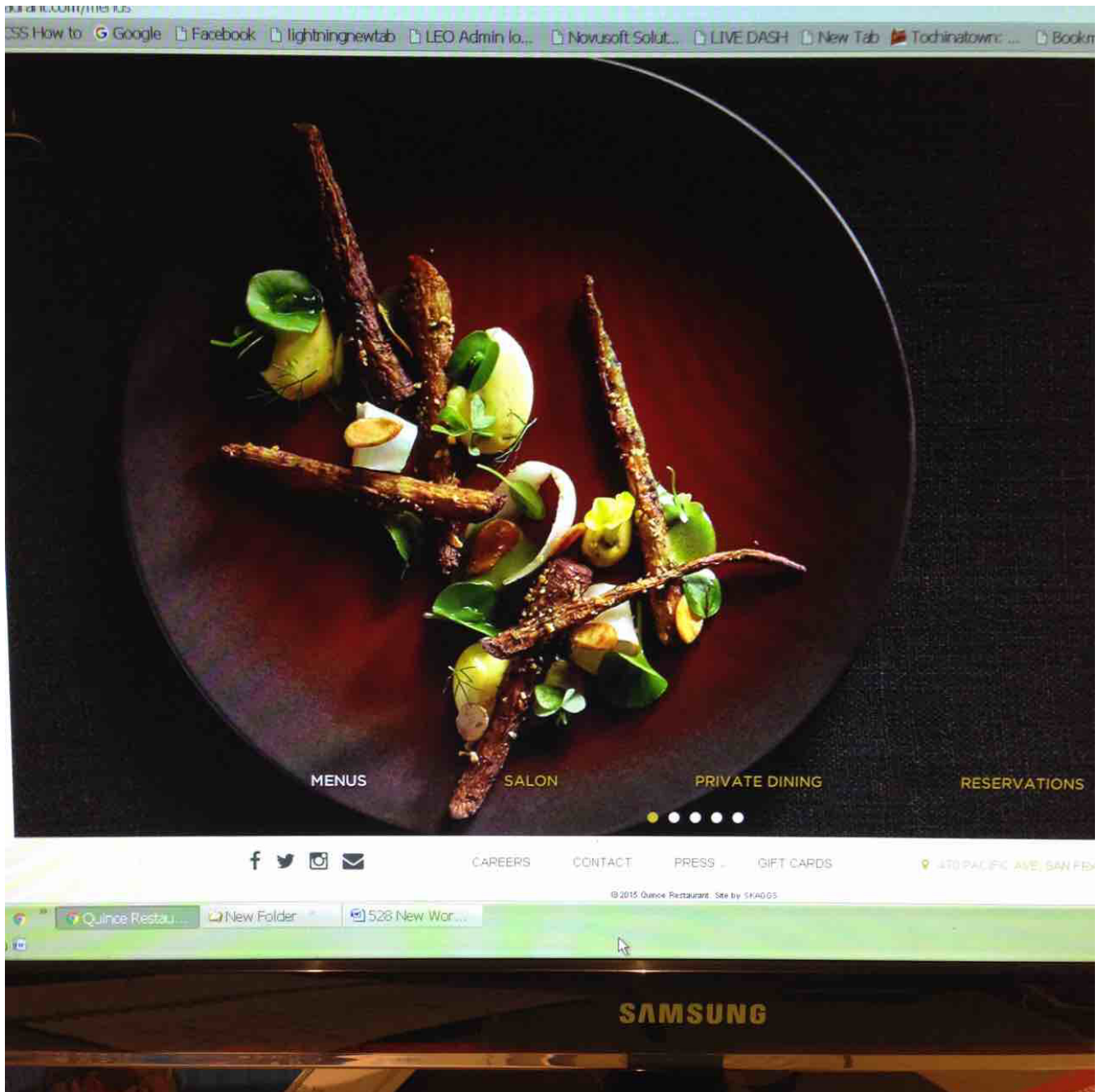




Photo from Mike Chau on Foodspotting

heck grease on auto out/Installed

Comment: check grease



MENUS

SALON

PRIVATE DINING

RESERVATIONS



CAREERS

CONTACT

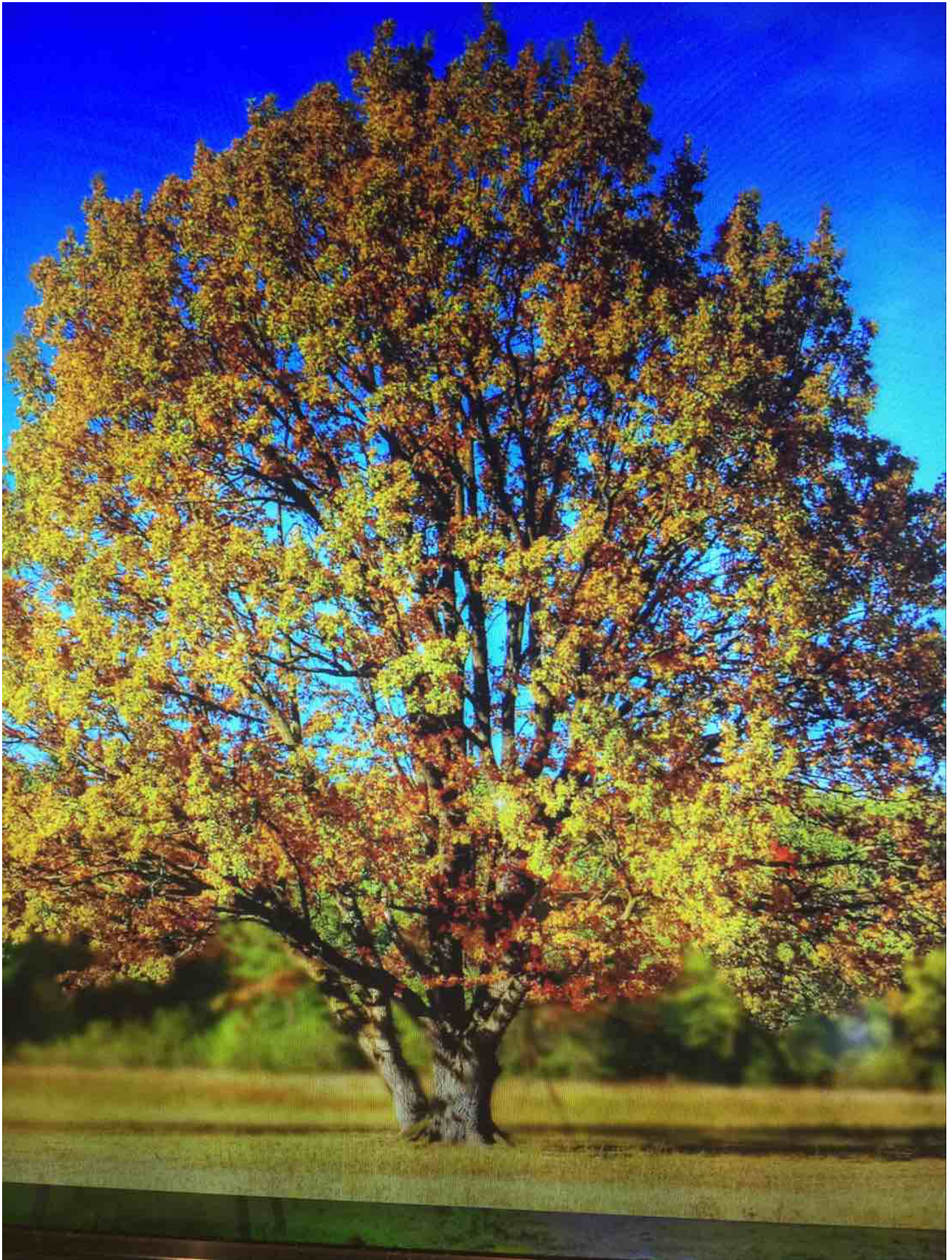
PRESS

GIFT CARDS

470 PACIFIC AVE, SAN FRANCISCO

© 2015 Quince Restaurant. Site by SKAGGS

SAMSUNG



Water Alarm-Hot Water Heater/AC Closet

Comment: water amram

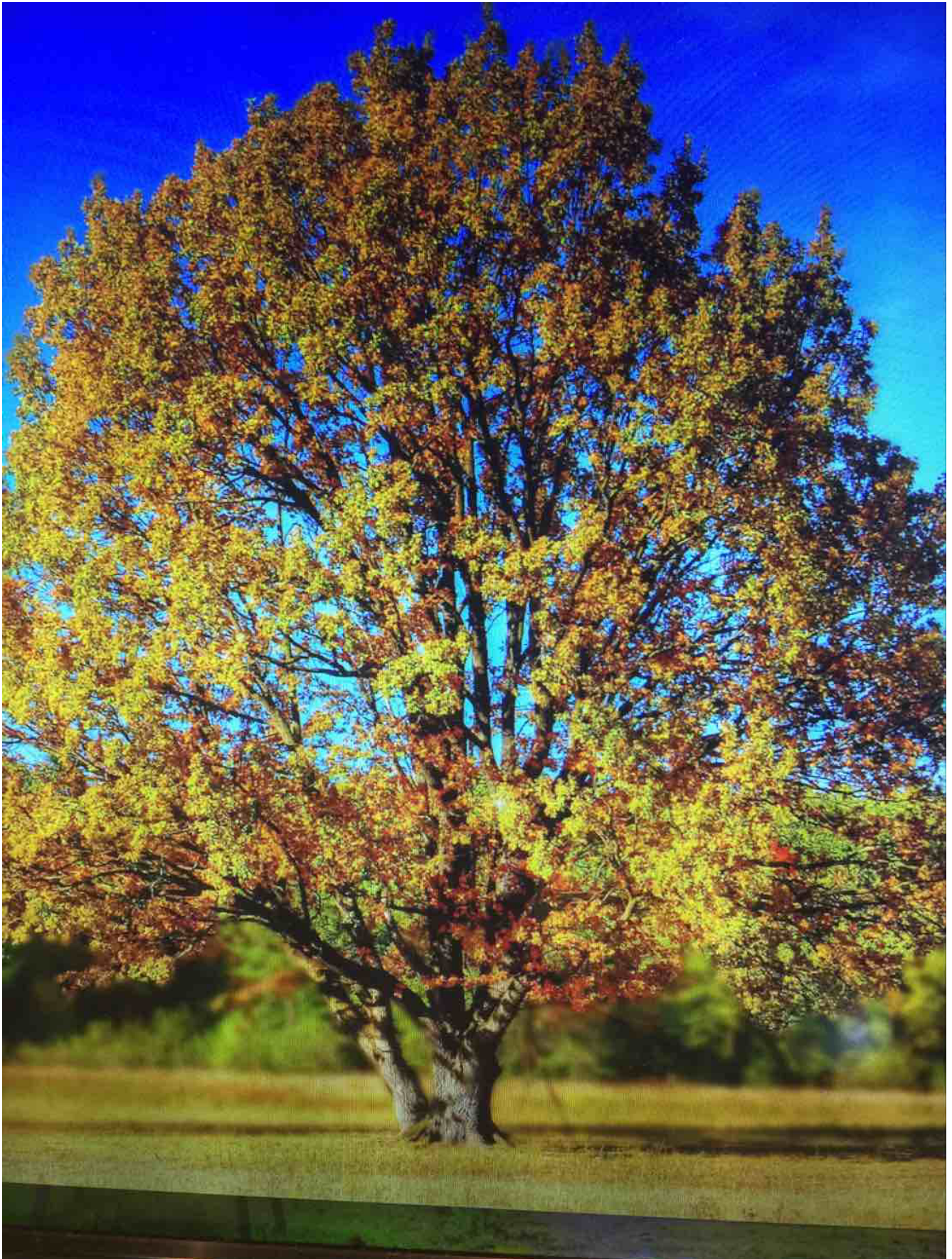




GFI on porches

Comment: GFI





Appliances:

Washer/Dryer

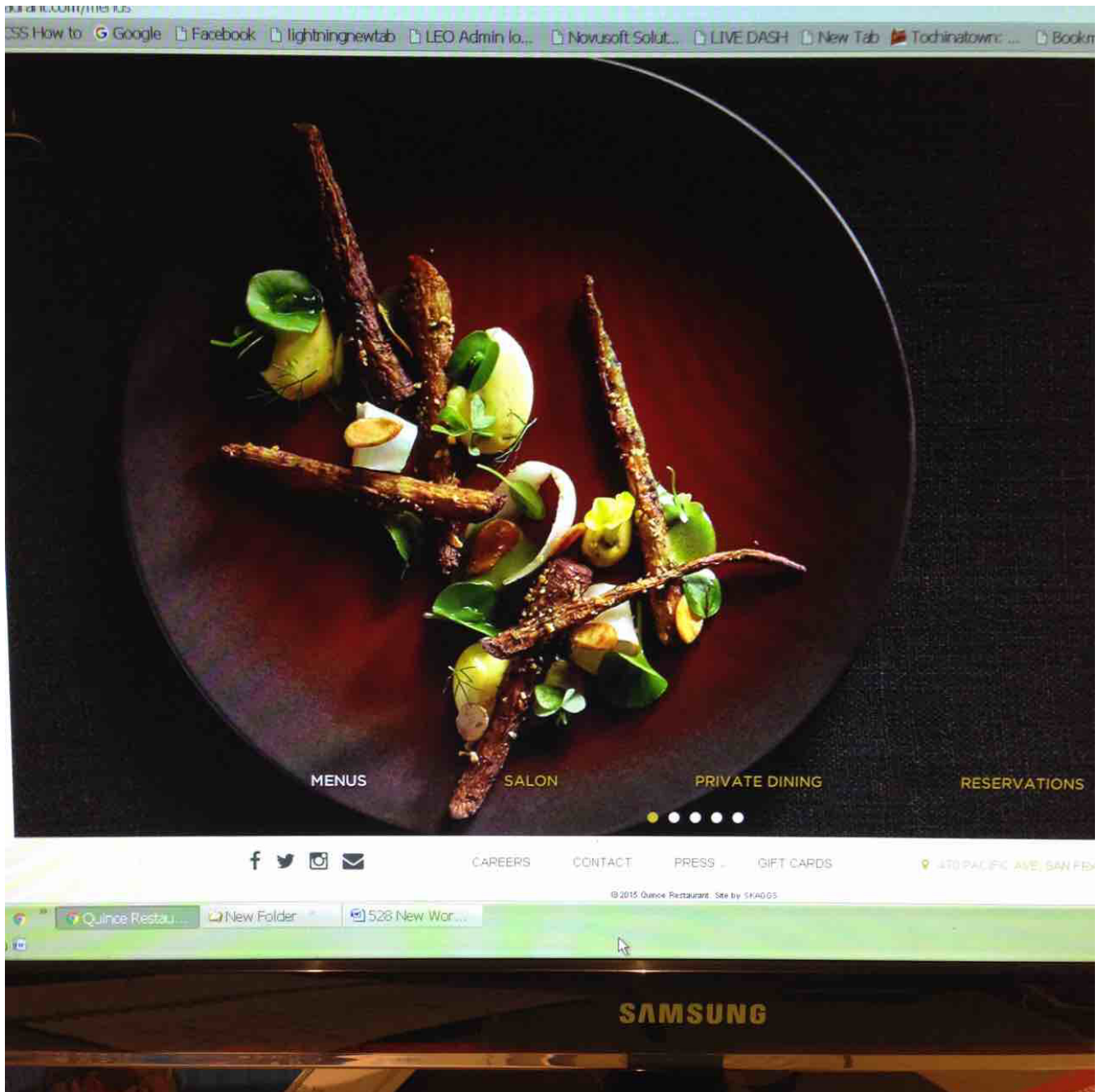
Comment: washer





Dishwasher

Comment: dish washer





Microwave

Comment: microwave

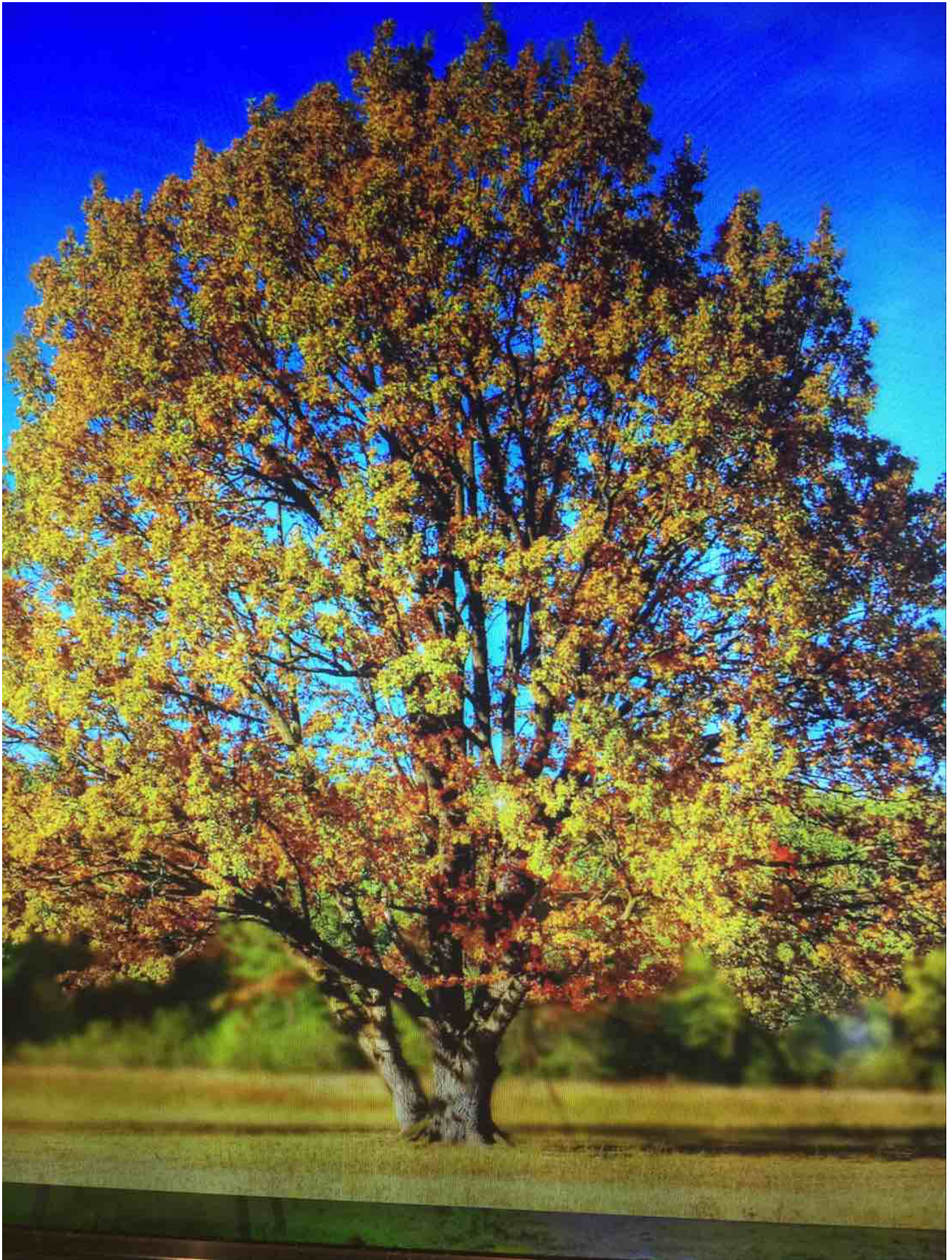




Range

Comment: range





Refrigerator

Comment: refrig



[MENUS](#)

[SALON](#)

[PRIVATE DINING](#)

[RESERVATIONS](#)



[CAREERS](#)

[CONTACT](#)

[PRESS](#)

[GIFT CARDS](#)

470 PACIFIC AVE., SAN FRANCISCO

© 2015 Quince Restaurant. Site by SKAGGS

Quince Restau...

New Folder

528 New Wor...

SAMSUNG



Photo from Ashley on Foodspotting